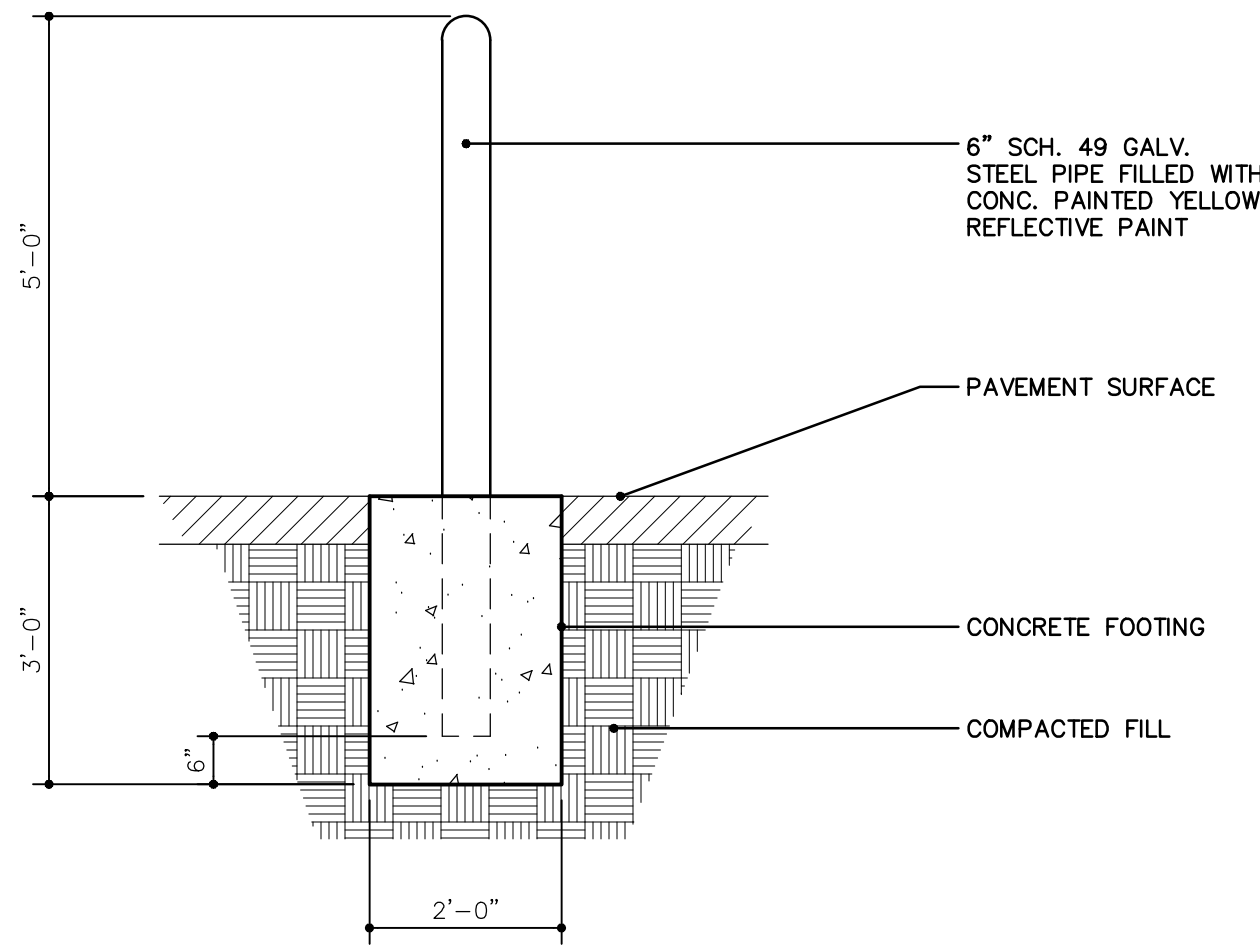


ADA DETECTABLE WARNING MAT DETAILS
SCALE: N.T.S.

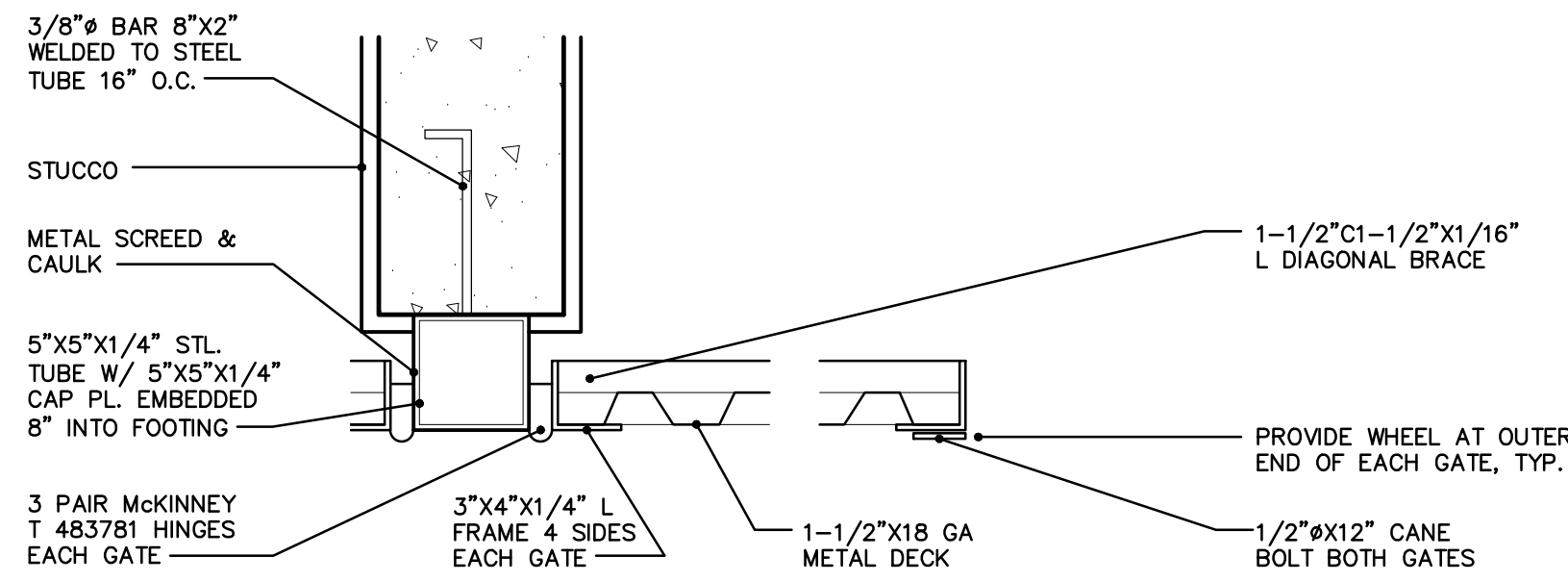
4



METAL BOLLARD DETAIL



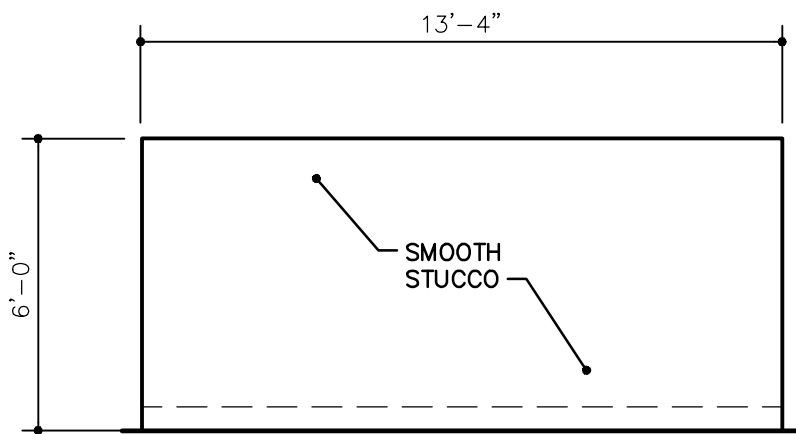
2



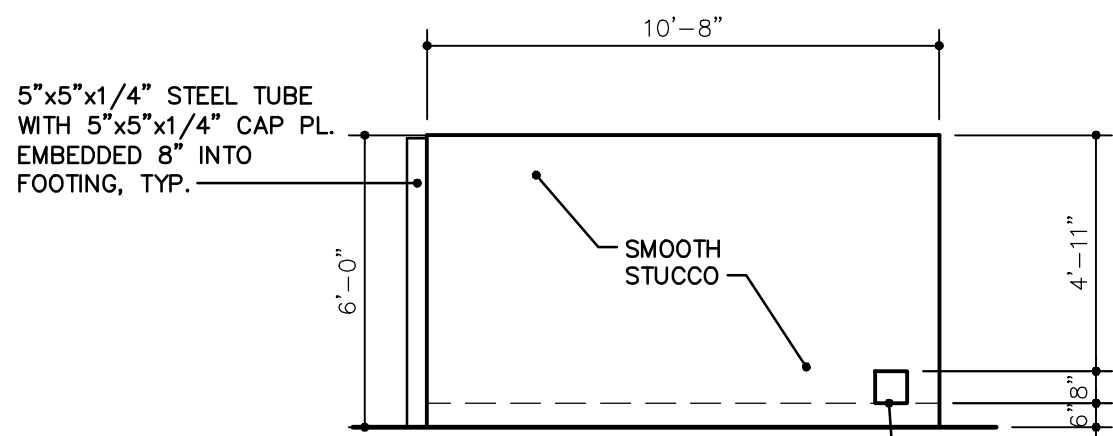
GATE JAMB DETAIL

SCALE: 1-1/2"=1'-0"

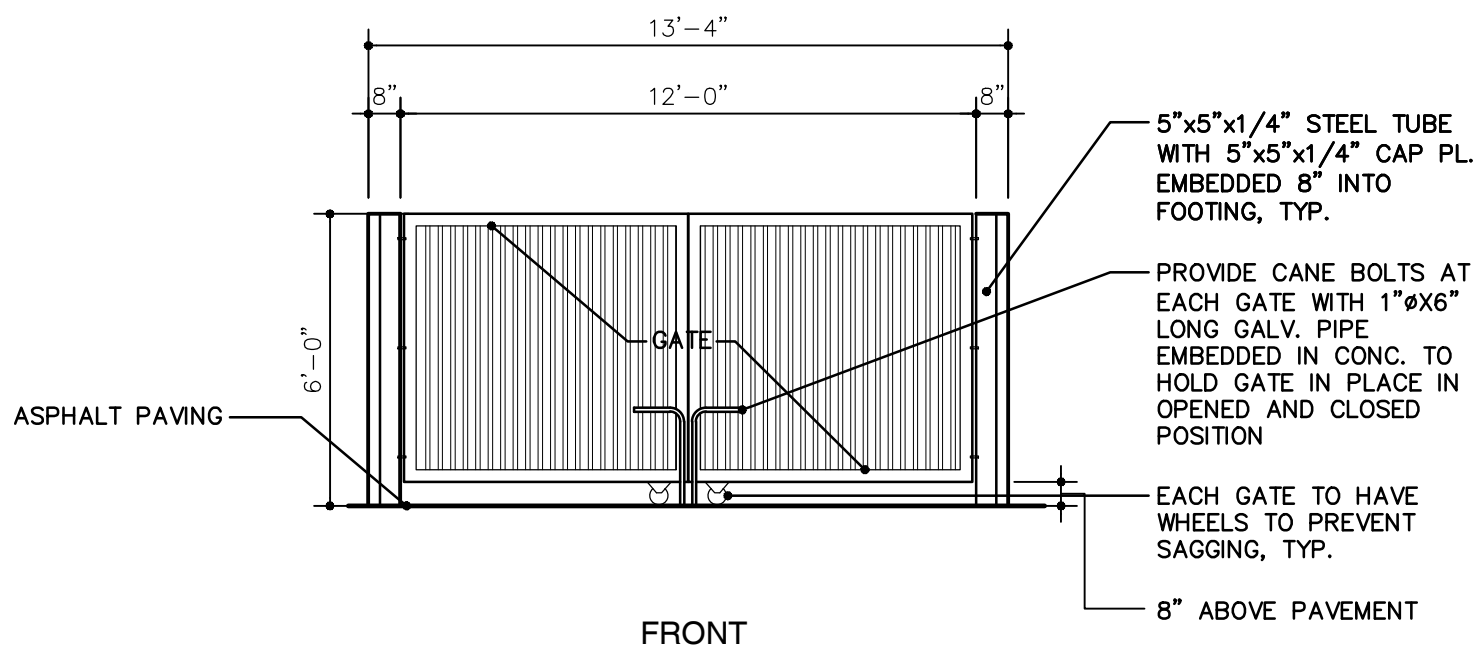
1.1



REAR



SIDE

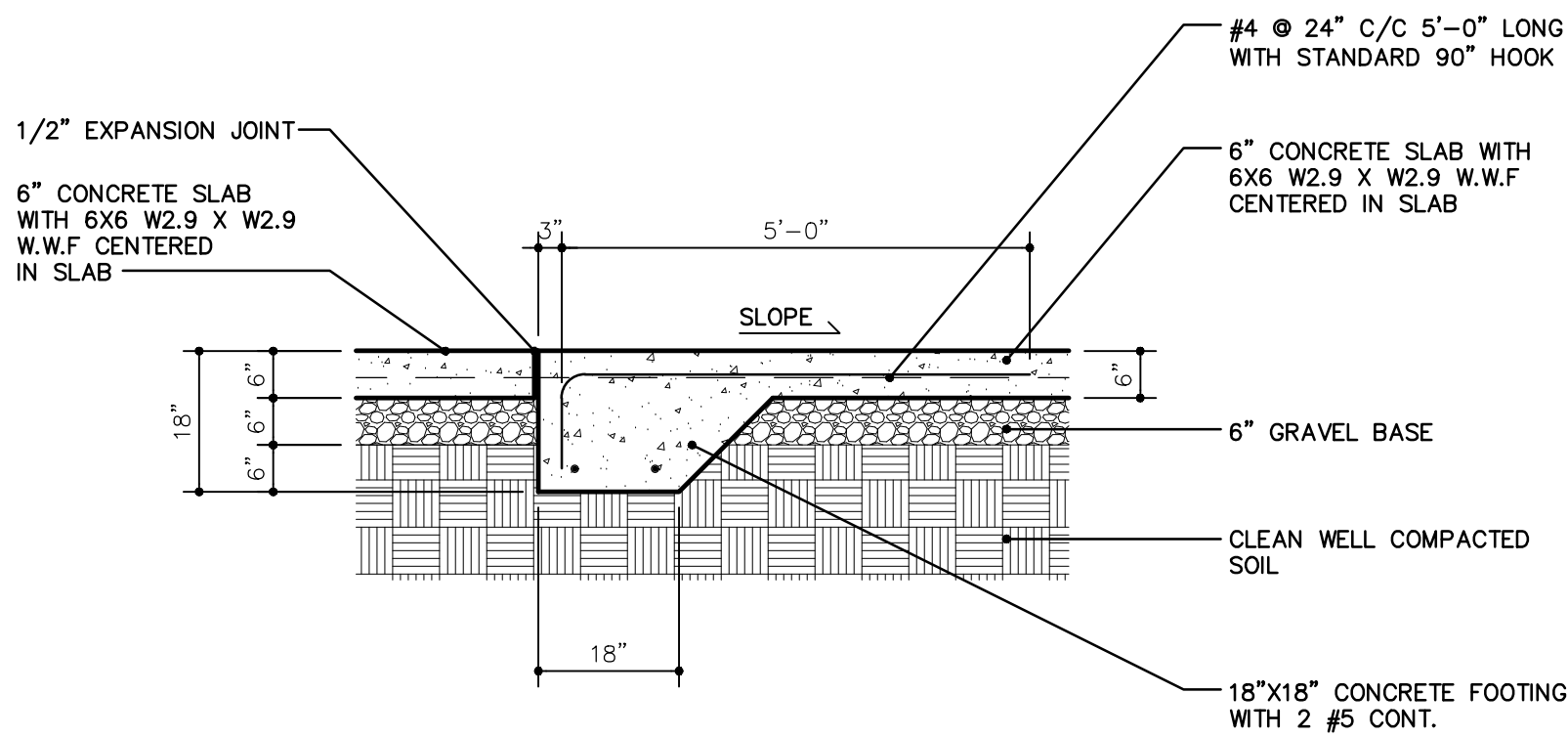


FRONT

DUMPSTER ELEVATIONS



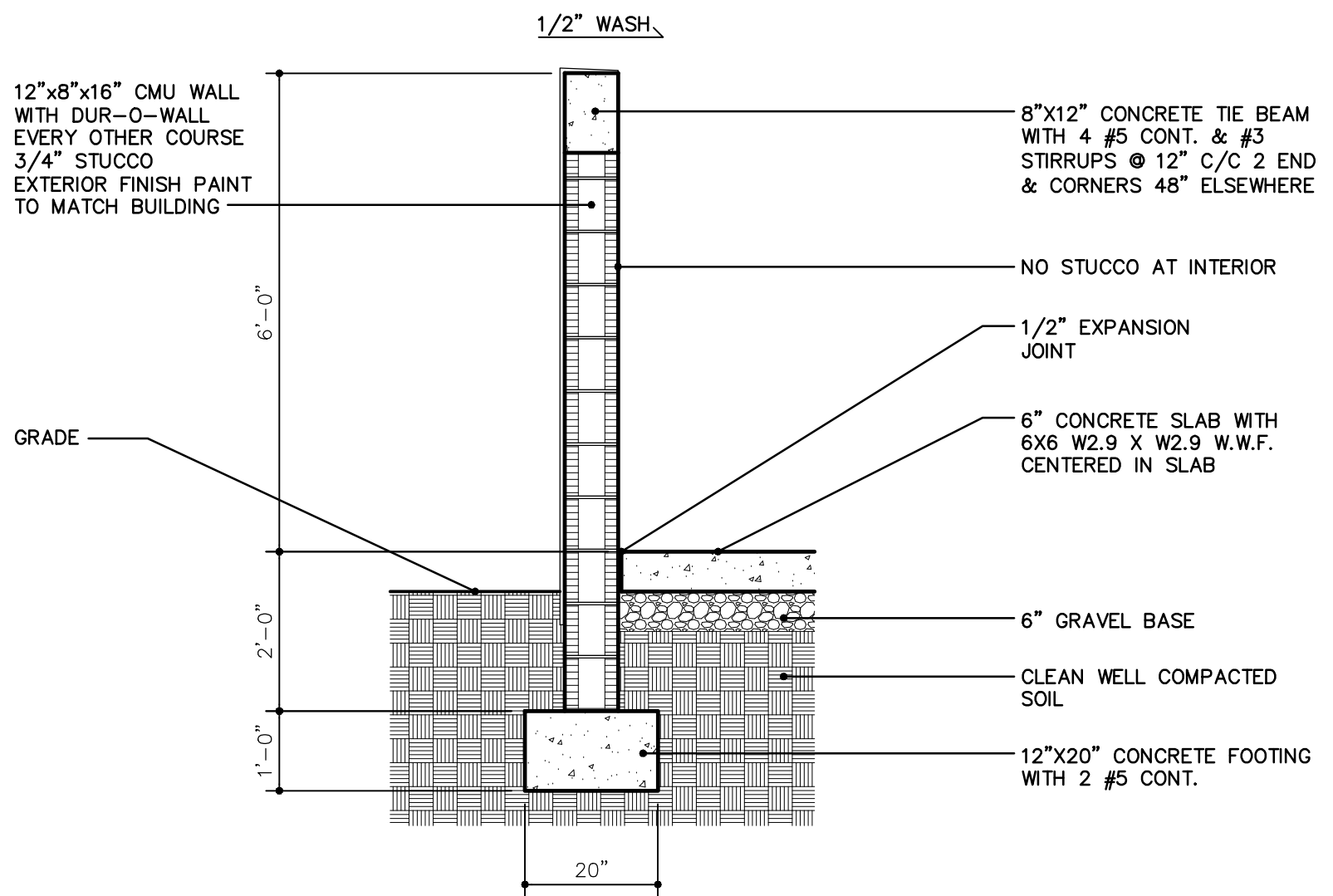
3



SECTION AT SLAB FOOTING



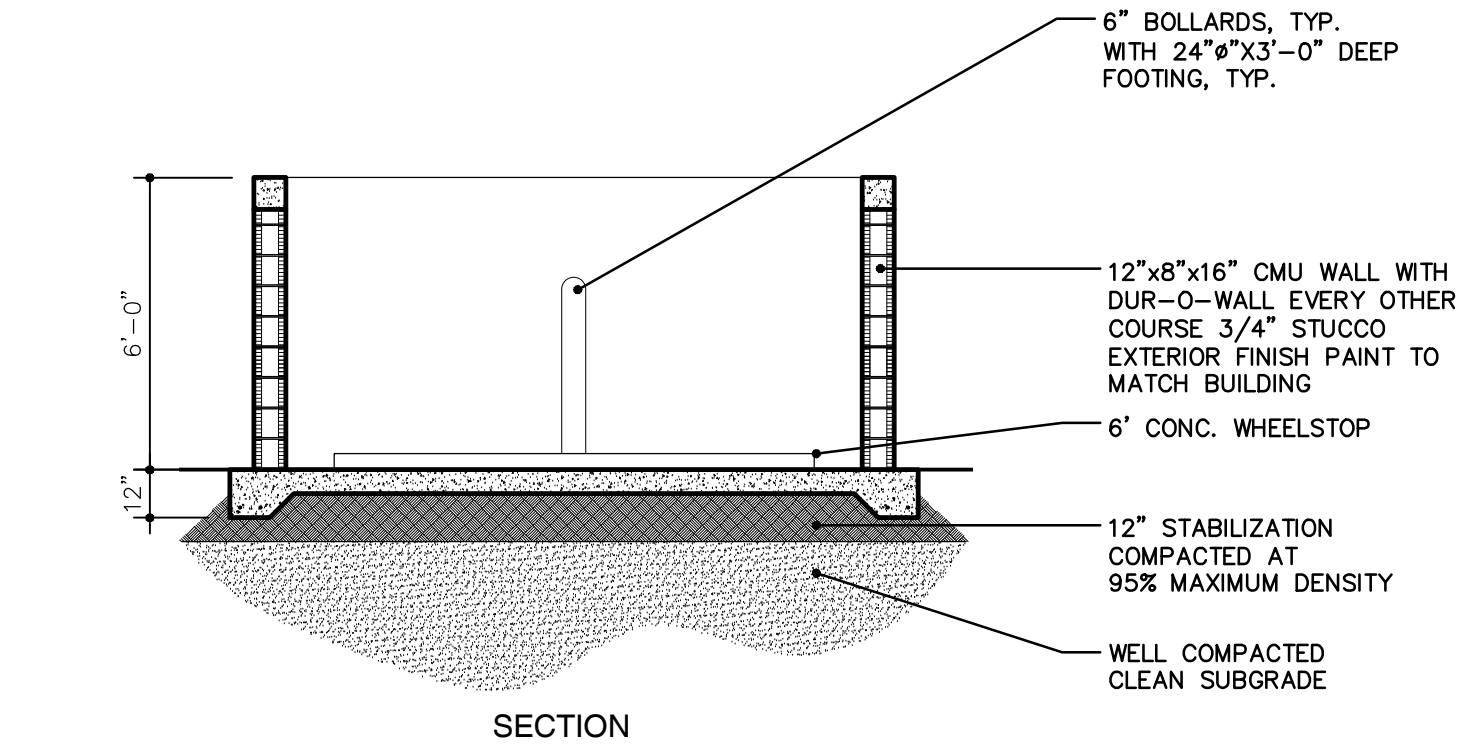
1.3



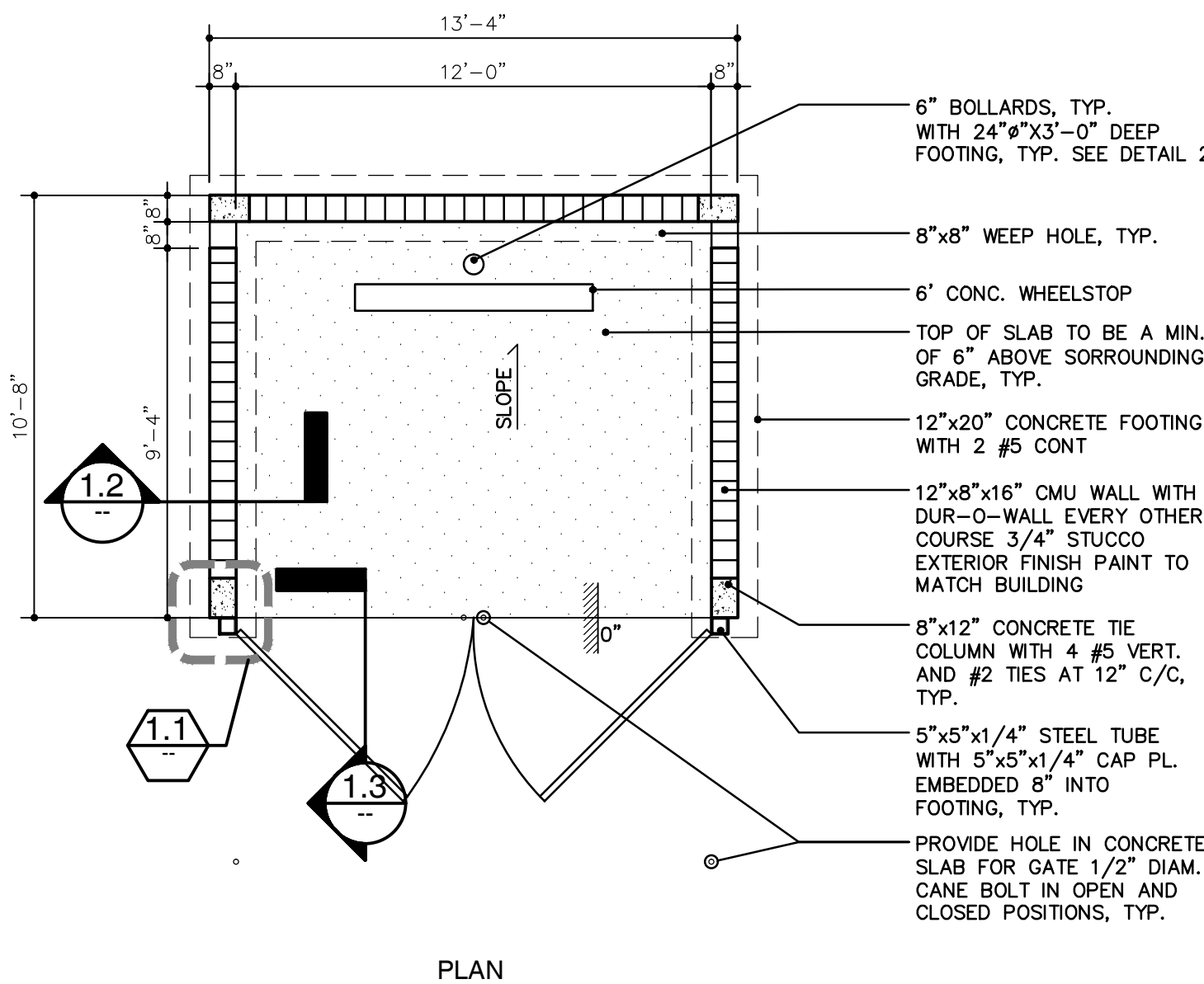
WALL DETAIL



1.2



SECTION



PLAN

DUMPSTER ENCLOSURE DETAILS



1

P&Z

NOTES:
1. THE ENCLOSURE GATES SHALL BE OPAQUE.

PZ22-12000026

3/26/2025

01.25.23 LT DPC Review Submittal

Job A2165

Sheet 10.08.21

Consulting Engineer

Proposed Offices

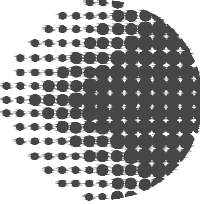
Power Petroleum HQ

Owner: 201 SW 12 Ave, Inc.

201 SW 12 Ave, Pompano Beach, 33069

SP502

oa ARCHITECTURE



Daniel Alonso
Florida Registration AR 98412
NOT FOR PERMIT UNLESS
SIGNED, SEALED & DATED